

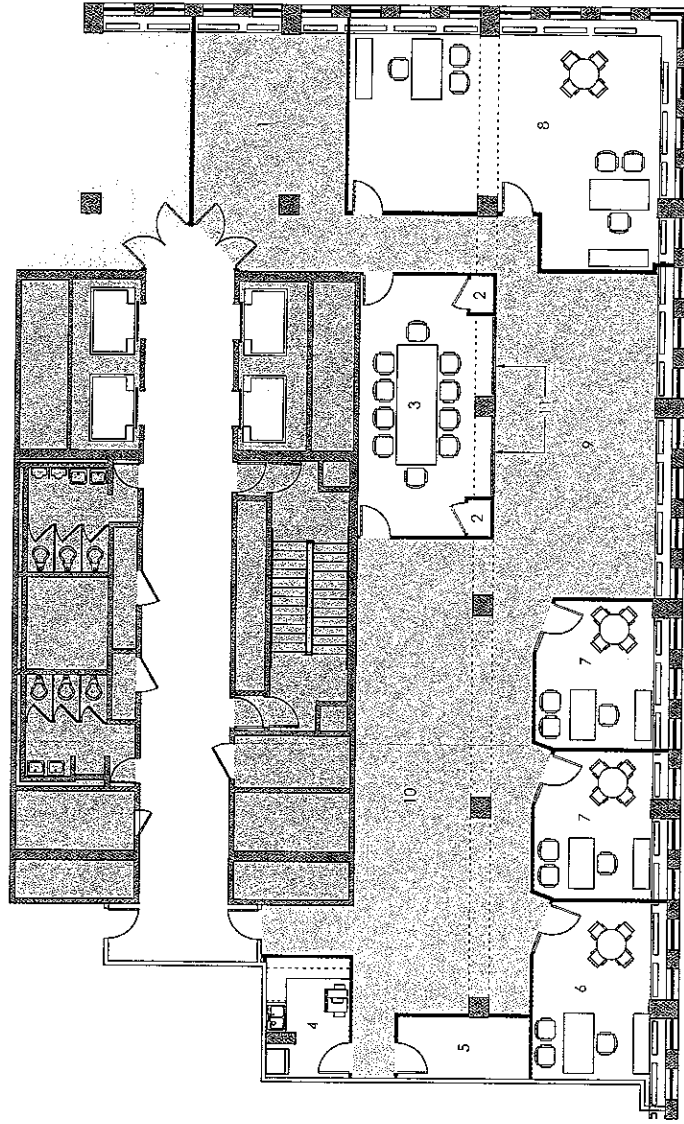


625

North Michigan

GOLUB**Key Room / Area Description Approx. Size**

- 1 Reception / Waiting 24' x 15'
- 2 Coat Storage 4' x 2'
- 3 Conference Room 26' x 13'
- 4 Pantry / Copy 12' x 8'-6"
- 5 Network / File Room 6' x 13'
- 6 Private Office 17' x 13'-6"
- 7 Private Office 15' x 13'-6"
- 8 Private Office 33' x 25'
- 9 Open Office 32' x 17'-6"
- 10 Open Office 47' x 17'
- 11 Glass panels on a drywall kneewall.

**Building Shell and Core**

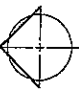
- Existing Partitions to Remain
- New Partitions
- New Partial Height Partitions
- Remove Existing Partitions

PERIGON COMPANIES

25th Floor

4,723 RSF

11/07/04

© 2004 Perigon Companies, Inc.
Michigan Building Group

North

4

Plan No